

ROUND OUTLETS

PRODUCT FEATURES

- Made in both 2" and 2 1/2" sizes
- All white outlets can be painted to match any decor
- Wood outlets are available in a wide variety, and can be stained and finished to match your decor

2" Outlets - Twist-Fit System

- Lock-and-release tabs for easy assembly
- Change outlet face plates in a snap
- Available in flush mount
- Available in **10 different wood species**
- Reduce supply tube installation time by as much as 50%!
- The Twist-Fit System provides the tightest connections and fastest installation.



2 1/2" Outlets

- White outlets can be painted to match any decor
- Outlets can be supplied from the factory in: Black, Brass Plated, and Chrome Plated
- Standard outlet kits come with toggles and screws
- Available in **10 different wood species**
- With 2 1/2" tubing, you have longer runs and less outlets.



UPC-256-CHR
Chrome 2 1/2" Outlet



UPC-256-BRS
Brass 2 1/2" Outlet

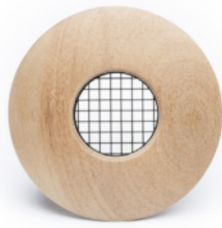


UPC-256-BLK
Black 2 1/2" Outlet

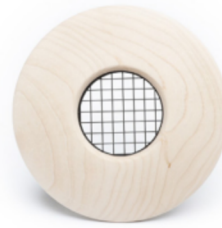
	Recommended Airflow	Recommended Number of Outlets	Outlet Material	Size of Opening (rough in hole size)	Weight (lbs.)
2" Outlets	30-35 CFM	6 per Nominal Ton	30% Glass Filled Polypropylene	4"	4.2 oz.
2 1/2" Outlets	40-45 CFM	5 per Nominal Ton	30% Glass Filled Polypropylene	5"	5 oz.



UPC-57T-WL-1
Walnut 2" TFS Outlet



UPC-57T-MH-1
Mahogany 2" TFS Outlet



UPC-57T-MA-1
Maple 2" TFS Outlet



UPC-57T-B-1
Birch 2" TFS Outlet



UPC-57T-WO-1
White Oak 2" TFS Outlet



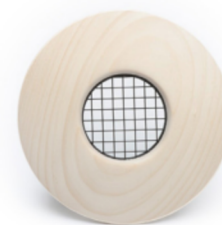
UPC-57T-PO-1
Poplar 2" TFS Outlet



UPC-57T-PI-1
Pine 2" TFS Outlet



UPC-57T-RO-1
Red Oak 2" TFS Outlet



UPC-57T-K-1
Knotty Pine 2" TFS Outlet



UPC-57T-C-1
Cherry 2" TFS Outlet



UPC-56TB-1
White 2" TFS Outlet

SPECIALTY OUTLETS

PRODUCT FEATURES

Fire-stop Duct Outlet for the 2" Supply Duct

- UL-555C 1-hour fire rating: designed for use in the ceiling, floor or wall applications where supply outlets are required by code to have a 1-hour or less F-rated structure
- Designed for static conditions, meaning that the fire suppression system should turn off the air flow in the event of a fire
- A special foam outlet will close off above a certain temperature, shutting off the air flow to the rest of the structure
- Same size as our UPC-56TB-1 and is installed to the drywall in the same manner (has different duct end of the connection)



UPC-56FR-1
Fire Rated Outlet

Angled Outlets

- Specially designed for use in vaulted ceilings to direct the air straight down
- The faceplate is angled at 15° or 25°



UPC-58-1-25
25° Angled outlet



UPC-58-1-15
15° Angled outlet

Part Number	Recommended Airflow	Recommended Number of Outlets	Angle	Size of Opening (rough in hole size)	Weight (lbs.)
UPC-56FR-1	30-35 CFM	6 per Nominal Ton		4"	1
UPC-56FR-1-BLK	30-35 CFM	6 per Nominal Ton		4"	1
UPC-58-1-15	30-35 CFM	6 per Nominal Ton	15 degrees	4"	1
UPC-58-1-25	30-35 CFM	6 per Nominal Ton	25 degrees	4"	1

PRODUCT FEATURES

- The rectangular outlets have a narrow (1/2") slot for air flow that gives it a better appearance in a sidewall application
- 90 degree slotted outlets UPC-67A are designed to quietly turn the air inside a typical stud wall cavity
- Straight outlets UPC-68 are designed for other limited space applications
- All slotted outlets may be used in the floor, ceiling, or high wall applications

UPC-67A
90° Plastic Slotted Outlet Assembly



UPC-68
Plastic Slotted Outlet Assembly

Part Number	Recommended Airflow	Recommended Number of Outlets	Outlet Material	Trim Plate Material	Rough in Hole Size	Weight (lbs.)
UPC-67A	30-35 CFM	7 per Nominal Ton	Plastic HDPE, black	Plastic, White, Paint-able	1" X 9.25"	2
UPC-68	30-35 CFM	7 per Nominal Ton	Plastic HDPE, black	Plastic, White, Paint-able	1" X 9.25"	2